

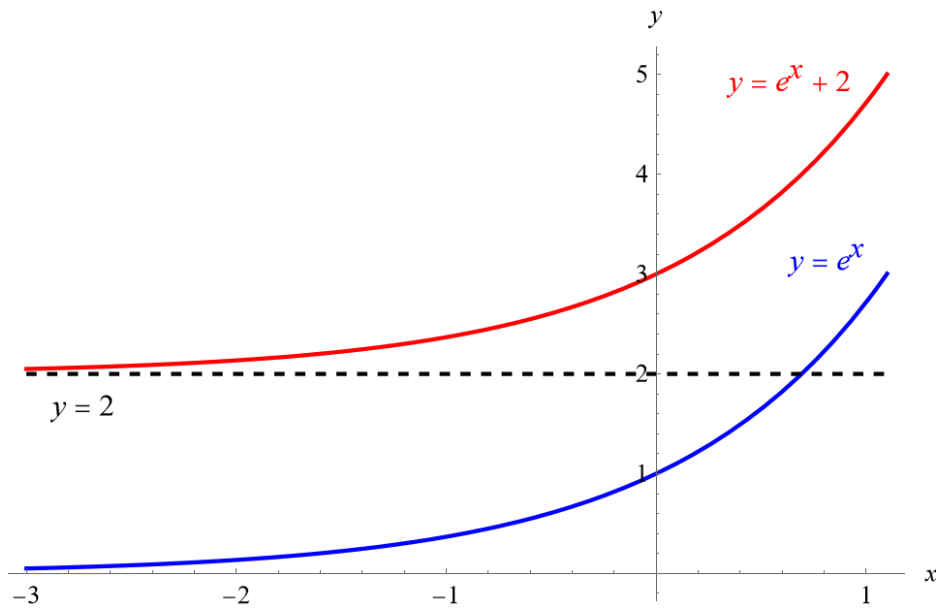
Exercise 239

For the following exercises, sketch the graph of the exponential function. Determine the domain, range, and horizontal asymptote.

$$f(x) = e^x + 2$$

Solution

Draw the parent function $y = e^x$ and then draw the transformation $y = e^x + 2$.



Domain : $\{x \mid -\infty < x < \infty\}$

Range : $\{y \mid 2 < y < \infty\}$

Horizontal Asymptote : $y = 2$